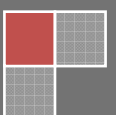


No. 1

Captains of pleasure fishing boats

Practice Exam with answers – no. 1

Plato.is is a website for those who want to study the requirements of knowledge that the Icelandic Maritime Administration makes for captains of pleasure fishing boats on Icelandic waters. It is made by the Centre for Lifelong Learning in the Westfjords in cooperation with the Icelandic Maritime Administration and practicing boat rentals.



Each question shall be answered by putting a cross (X) in front of the best answer.

Navigation Rules

1. The picture here to the right shows a boat which is:

- A) Not under command
- B) Fishing
- C) Loose
- D) Lying at an anchor



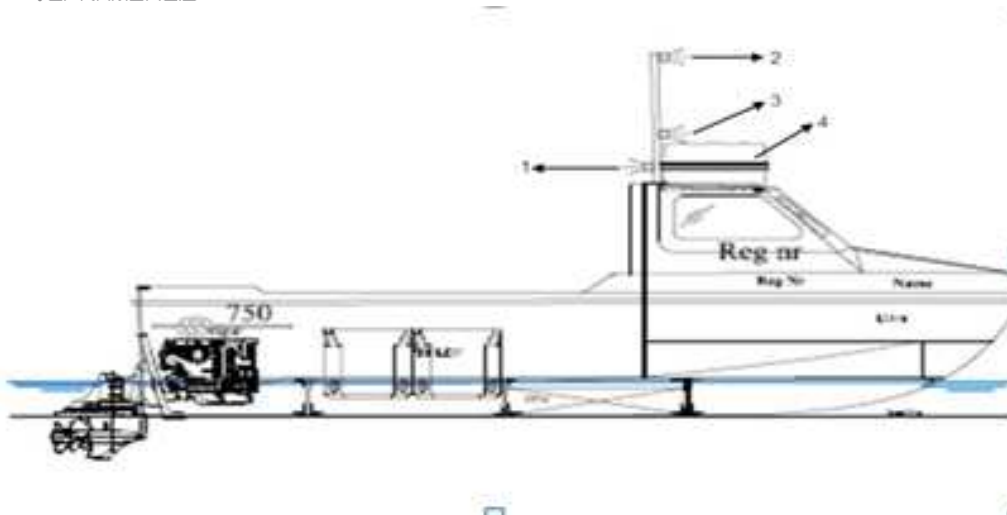
2. Who is responsible that the navigation rules of the road are followed?

- A) The engineer officer
- B) The captain
- C) The ship's owner
- D) The captain and the crew



3. The site plan here above two ships are meeting head-on:

- A) A should give way to B
- B) B should give way by altering it's course to larboard
- C) A should drive backwards
- D) Both should give way by altering their course to starboard

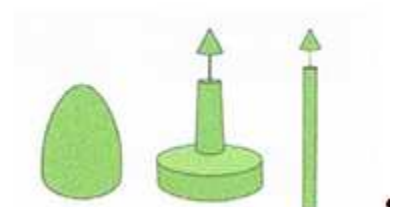


4. In the picture here above, light number 2 is:

- A) The sidelight
- B) The sternlight
- C) The operating light
- D) The masthead light

5. What do these symbols stand for?

- A) Larboard lateral marks
- B) Starboard and larboard lateral marks
- C) Starboard lateral marks
- D) There is no need to respect these symbols



Security

6. Channel 9 on the radiotelephone is only used to:

- A) Announce fishing
- B) Share weather information
- C) Announce when the vessel leaves and enters the harbour
- D) Announce any mishaps or accidents that may occur

7. Channel 16 on the radiotelephone is only used to:

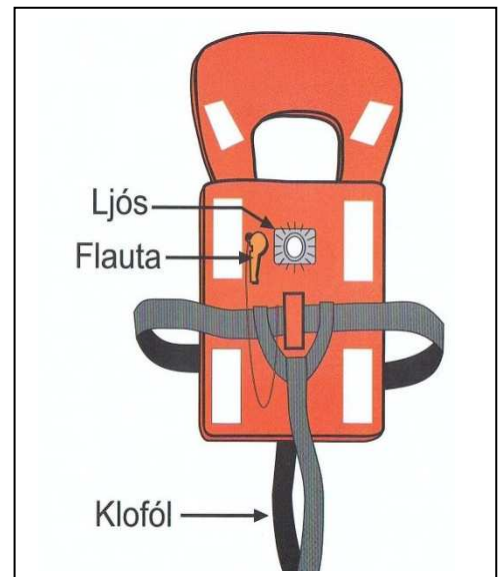
- A) Announce any mishaps or accidents that may occur
- B) Announce fishing
- C) The location of the ship
- D) Announce when the vessel leaves and enters the harbour

8. The ship's own weight is:

- A) It's weight with the catch
- B) It's weight with the crew
- C) It's weight when nothing is on board
- D) It's weight with the fishing gear

9. The life jacket's crotch strap is necessary because it:

- ___ A) Makes the life jacket stronger
- ___ B) Makes the life jacket more handy
- ___ C) Keeps the life jacket in place
- ___ D) Keeps the life jacket close to the body



10. What does the following stand for: Mayday in the radiotelephone; rockets and flares; the signal flag NC?

- ___ A) These are all international distress signals at sea.
- ___ B) These are all ordinary signalling which are used to attract attention
- ___ C) These are all international signals for communication between ships that transport hazardous cargo
- ___ D) These are all international signalling between oil tankers

Navigation

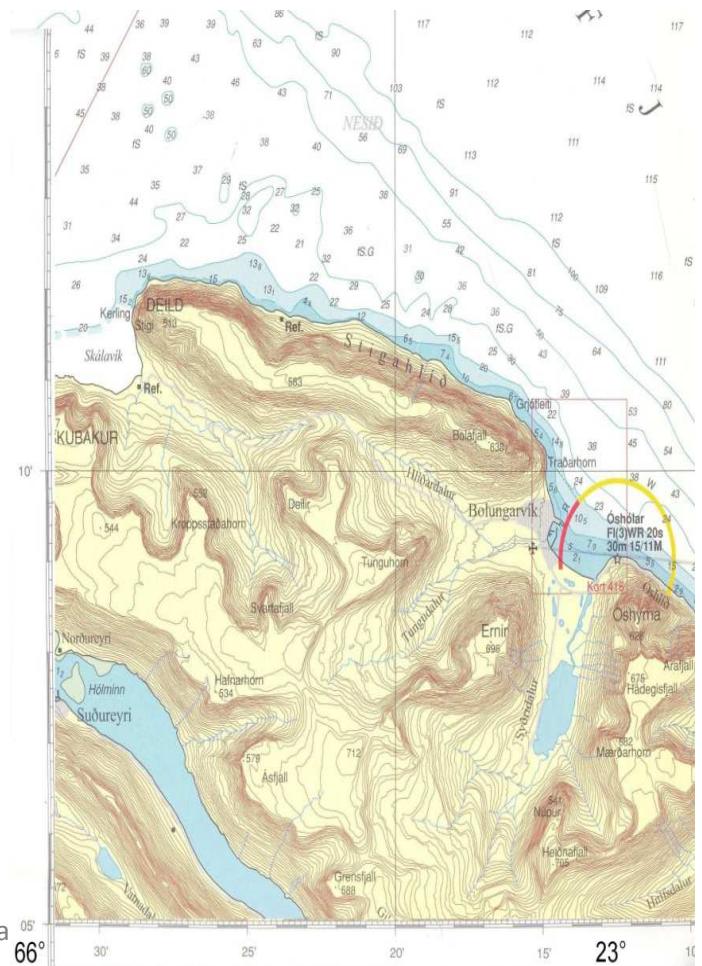
11. This is a picture of:

- ___ A) A compass
- ___ B) A radiotelephone
- ___ C) A plotter
- ___ D) A plotter and an echo sounder



12. The scale on the map is used to measure:

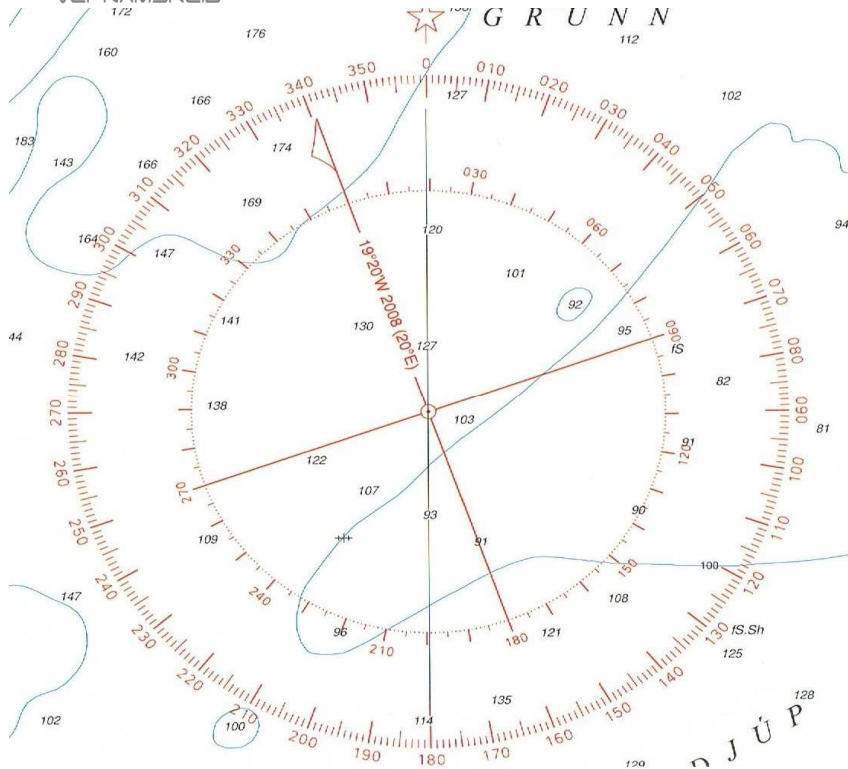
- ___ A) Degrees and minutes
- ___ B) Dept
- ___ C) The size on the map
- ___ D) The course in the map





13. The lighthouse at Óshólar is signified as FI(3)WR 20s in the nautical chart. Which means that:

- A) The lighthouse shows three colours, which blink every 20 seconds
- B) The lighthouse shows two colours, white and red, which blink every 20 seconds
- C) Each light signal lights for 3 seconds and changes every three seconds
- D) The lighthouse shows three colours, white, red and green, which blink every 20 seconds



14. Westfjord banks the deviation is about:

- ___ A) 10,2° westerly
 ___ B) 10,2° easterly
 ___ C) 19,2° westerly
 ___ D) 19,2° easterly

15. If sailed 180° true course and the deviation is + 15°, then the compass course is:

- ___ A) 165°
 ___ B) 185°
 ___ C) 195°
 ___ D) 205°

Answers:

1) B

2) D

3) D

4) D

5) C

6) C

7) A

8) C

9) C

10) A

11) D

12) A

13) B

14) C

15) A